

COMPACT VALVE

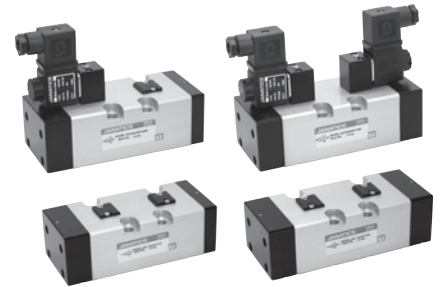
Series DS4

Cat No DS4 - 01 - 03 - A

COMPACT VALVE - ISO SIZE 3

Features

- Mounting interface suitable for ISO 5599-1
- Manual operator - Push type
- Wide range of coil voltages

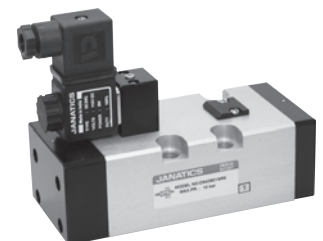
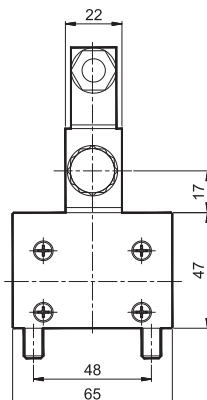
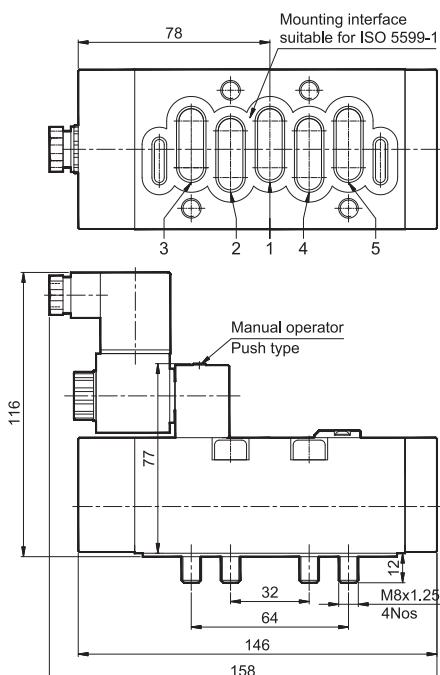


Technical Specifications

Model	DS4
Type	5/2 - SR, SS, ER & EE
Design	Spool type
Mounting interface	Suitable for ISO 5599-1 Size 3
Pneumatic connection on sub base	G1/2
Medium	Compressed air, filtered, lubricated
Minimum working pressure	2 bar
Maximum working pressure	10 bar
Recommended oil for lubrication	ISO VG32 (Servo system 32)
Ambient temperature	-10° to +60° C
Medium temperature	+5° to +50° C
Flow @	4500 lts/min
Materials of construction	Aluminium, Brass, Acetal, PBT, Zinc, Nitrile, Steel
Electrical	
Coil width	22 mm
Voltage (V) ± 10%	AC (50 Hz) - 24, 48, 110, 220
	DC - 12, 24, 48, 110
Power consumption	AC - 6 VA, DC - 5 W
Duty cycle	Continuous
Class of insulation	Class F
Type of coil protection	IP65
Cable entry (PG9)	Suitable for Ø6 to Ø8 OD Cable (2wire / 3wire)

® Inlet pressure 6 bar, and pressure drop 1 bar

5 / 2 Single Solenoid pilot operated valve with spring return



1 - Inlet, 2,4 - Outlet, 3,5 - Exhaust

Ordering No*	DS43501SR8
Symbol	 4 2 5 1 3

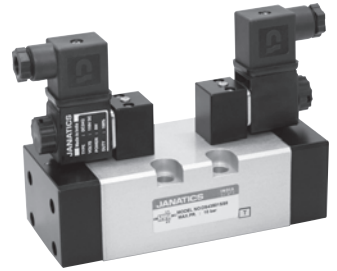
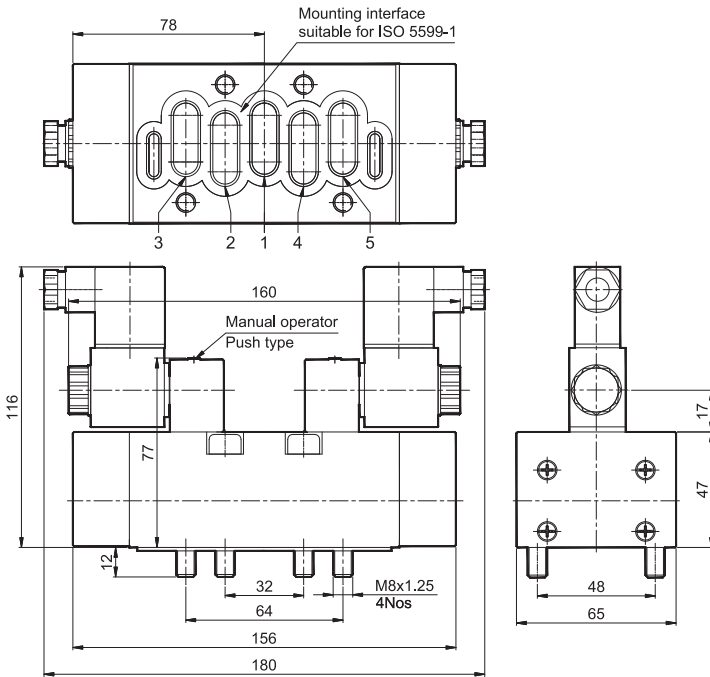
* For ordering no, voltage to be added

COMPACT VALVE

Series DS4

Cat No DS4 - 01 - 03 - A

5 / 2 Double Solenoid pilot operated valve

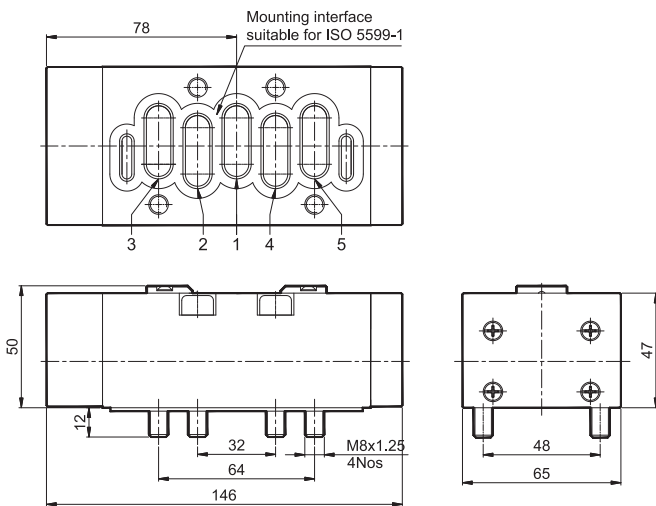


1 - Inlet, 2,4 - Outlet, 3,5 - Exhaust

Ordering No*	DS43501SS8
Symbol	

* For ordering no, voltage to be added

5 / 2 Single External pilot operated with spring return valve



1 - Inlet, 2,4 - Outlet, 3,5 - Exhaust, 14 - External pilot

Ordering No*	DS43501ER8
Symbol	

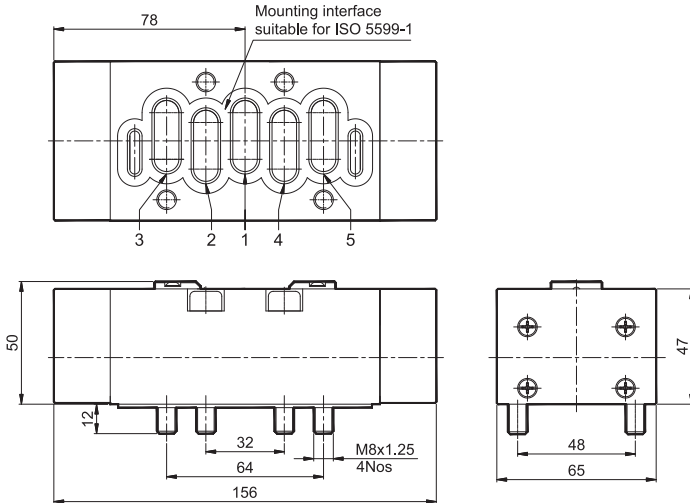
* For ordering no, voltage to be added

COMPACT VALVE

Series DS4

Cat No DS4 - 01 - 03 - A

5 / 2 Double External pilot operated valve



1 - Inlet, 2,4 - Outlet, 3,5 - Exhaust, 12, 14 - External pilot

Ordering No*	DS43501EE8
Symbol	

* For ordering no, voltage to be added

How to order

1. Solenoid valve + “Connectors without LED”

While ordering Solenoid operated valves, please mention the suffix given below along with the model number to indicate the required voltage

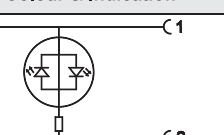
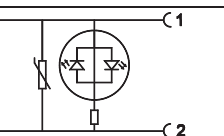
A	220V AC	Q	110V DC
B	110V AC	S	48V DC
D	48V AC	W	24V DC
G	24V AC	R	12V DC

Example

- The ordering no. for ISO size 3 - 5/2 24V DC Single solenoid spring return valve with PG cable is **DS43501SR8-W**
- The ordering no. for ISO size 3 - 5/2 24V DC Single solenoid spring return valve with Moulded cable is **DS43501SR8-W1**

2. Solenoid valve + “Connectors with LED”

While ordering Solenoid operated valves with LED connectors, given below in the corresponding tables.

Voltage		Housing Colour & Indication		LED colour		Connection type			
A	220V AC	T0  Transparent housing with Bipolar LED indicator confirming supply voltage	C1 C2	R	Red	0	PG Cable entry		
G	24V AC			T1  Transparent housing with Bipolar LED indicator confirming supply voltage plus varistor to give over voltage protection to the source and load	C1 C2	R	Red	1	Moulded cable (with 2metre length)
W	24V DC								

Coil (without connector)	Ordering no.	
	AC	DC
220	AC23A	- NA -
110	AC23B	DC24Q
48	AC23D	DC24S
24	AC23G	DC24W
12	- NA -	DC24R

Example: The Ordering no for ISO size 3 - 5/2, 24V DC Single solenoid spring return valve, connectors with LED of Transparent colour housing with Bipolar LED and varistor, Red colour LED with moulded cable: **DS43501SR8-WT1R1**

Subject to change